

# AquaDoula®

Delivering the Powerful Benefits of Water for Labor and Birth.™

## What should you do with the AquaDoula spa after the birth?

1. Unplug the AquaDoula Heater and immediately drain the Spa.
2. Dispose of the disposable liner and spot clean the Spa as necessary, remembering to clean, rinse and dry the cover before repacking .
3. Following the check-list below, pack the spa and accessories in the original box with the original packing materials.

- \_\_\_ Spa Wall with Pull Pin inserted
- \_\_\_ Carrying Strap Fastened Around the Wall
- \_\_\_ Floor Pad
- \_\_\_ Insul-cover
- \_\_\_ AquaLiner
- \_\_\_ Temperature Controls w/GFCI Plug
- \_\_\_ Floating Thermometer
- \_\_\_ Submersible Pump in Bio-Bag
- \_\_\_ AquaDoula Wall Clip
- \_\_\_ Faucet Adapter
- \_\_\_ AquaLiner Patch Kit
- \_\_\_ Instruction Booklet

4. Close & seal the box completely. Attach the enclosed return shipping label/pouch to the top of the AquaDoula original rental box. NOTE: Fastening the carrying strap around the wall unit enables the spa to remain in the confined shape.
5. Call us toll free, 1-800-275-6144 within 3 days of the baby's birth. We will contact the shipper for pickup of the AquaDoula.

[www.AquaDoula.com](http://www.AquaDoula.com)

# AquaDoula®

Delivering the Powerful Benefits of Water for Labor and Birth.™

## Rental Policy

The AquaDoula rental is scheduled on a per birth basis for a period of up to 3 weeks. After the initial 3 week period, the rental fee is \$75 per additional week or portion thereof.

**Rental reservations must be confirmed with a signed AquaDoula Rental Contract prior to shipping. All AquaDoula rentals are shipped prepaid.**

**AquaDoula rentals are non-refundable with the following exceptions.**

Once a reservation is made, a full refund may be received ONLY if the reservation is cancelled PRIOR to the AquaDoula rental being shipped. If the AquaDoula rental has been shipped, a partial refund is possible ONLY if the AquaDoula rental is REFUSED from the shipper upon delivery attempt.

In that event, the client is responsible for a \$75 non-refundable portion of the rental fee as well as the shipping charges, both ways.

**Once the AquaDoula rental is received no refunds are possible, even if the AquaDoula is unused by the client.**

## Rental Buy-Out Policy

If you wish to purchase the AquaDoula, you may, during the course of your rental, purchase the AquaDoula for \$899.

## Purchase Policy

Upon the prepaid purchase of the AquaDoula, the purchaser may return the spa and accessories, UNUSED, within 30 days of purchase and receive a refund less shipping and handling, and a restocking fee (20% of purchase price). All accessories not returned with the AquaDoula are billed at full retail value.

## Infection Control Policy

AquaDoula Spas are thoroughly cleaned and sanitized between rentals. The quaternary germicidal detergent used is Maxima 128.

Each rental is provided with an AquaDoula form-fit disposable liner. The disposable liners are 4ml thick, latex free, LDPE plastic and are double sealed to prevent leaks. The disposable liner covers the inside, as well as the outside, of the entire spa. After use, the liner is easily removed and disposed of by the client.

Each client provides their own fresh, clean garden hose to use for filling, as well as draining, the AquaDoula.

[www.AquaDoula.com](http://www.AquaDoula.com)

TUBS TO GO! Inc. ♦ 3101-111th St. SW, Bay N ♦ Everett, WA 98204 ♦ 1-800-275-6144 ♦ ph(425)348-6729 ♦ fax(425)348-5009

# AquaDoula®

Delivering the Powerful Benefits of Water for Labor and Birth.™

Thank you for choosing AquaDoula, the original portable waterbirth spa. The following are a few simple recommendations intended to facilitate your use of the AquaDoula.

If you are renting the AquaDoula, before unpacking, please note how it is packed in its shipping box, so that re-packing the AquaDoula when you are finished will be easier. Carefully unpack the AquaDoula, exercising care to avoid damaging the shipping box and packing materials as they will be required for re-packing the AquaDoula for return shipment.

Please read and follow the enclosed AquaDoula Instruction Guide prior to and during assembly.

Practice assembling the AquaDoula at least once upon receiving it, as to familiarize yourself with its components and ease of set up.

Always fill the AquaDoula from a hot water tap with a clean garden hose.

**IMPORTANT:** You must fill the AquaDoula Spa with warm/hot water to the desired comfort temperature, generally 98° F approx. The AquaDoula's heating system is designed to only maintain the water temperature after the AquaDoula is filled to the desired temperature, although water temperature will rise with the Floating Cover on.

**NOTE:** To maintain an accurate temperature reading you must ensure that the water in the AquaDoula has been thoroughly mixed, when filling, as well as when standing unused.

Thermal layers occur when the water has been standing in the AquaDoula especially when left with the cover on, unused. The thermometer floats at the top reading the temperature of really just the first 6 inches or so of water, and hot water naturally rises to the top, while cold water naturally sinks to the bottom, which is where the temperature probe is. Just be sure to keep the water mixed up and you will have more success in maintaining an accurate temperature.

As water quality varies from region to region, a general recommendation is to replace the water and disposable liner after 24 to 72 hours, or sooner depending on the water quality as a result of usage.

After use **DO NOT** replace the cover on the AquaDoula; begin the draining and cleaning process as outlined in the Instruction Guide.

**CLEANING:** After the AquaDoula is drained and the disposable liner is disposed of:

- 1) Clean all surfaces with a germicidal detergent or 10% bleach/water solution, first removing any visible fluids and particles.
- 2) Disinfect all surfaces by wetting them with the cleaning solution and allowing it to remain wet for 5 to 10 minutes.
- 3) Rinse all surfaces with fresh water.
- 4) Towel dry all surfaces thoroughly before folding and packing. All moisture must be removed prior to storing or shipping.

If the AquaDoula has been stored for an extended period or has otherwise been exposed to potential contamination, repeat steps 2 and 3 prior to the next use.

Your attention to these considerations is greatly appreciated.

If you have any questions please call.

AquaDoula

[www.AquaDoula.com](http://www.AquaDoula.com)

TUBS TO GO! Inc. ♦ 3101-111th St. SW, Bay N ♦ Everett, WA 98204 ♦ 1-800-275-6144 ♦ ph(425)348-6729 ♦ fax(425)348-5009



## Instruction Guide

Delivering the Powerful Benefits of Water for Labor and Birth.™

## Contents

AquaWall w/Pull Pin	Disposable Liner(s)
AquaLiner	Faucet Adapter (2 piece M/F)
Floor Pad	Floating Thermometer
Floating Cover	Disposable Gloves
Temperature Controls	AquaLiner Patch Kit
GFCI	Submersible Pump
AquaWall Clip	Carrying Strap

## Specifications

### Assembled Dimensions:

Diameter - 4'6"  
Height - 25"

### Storage/Transport Dimensions:

Diameter - 1'8"  
Height - 2'

### Water Capacity:

Filled to a depth of 18 inches, the AquaDoula holds approximately 150 gallons, and weighs approximately 1,250 lbs.

### AquaDoula Heater:

120V • 550W • 4.5A • EMF Reduced • Fully Grounded • GFCI Included

The AquaDoula Heating System is constructed in compliance with specifications of the UL 1445 Standard.

## Before you start

Upon opening the AquaDoula Package verify the contents before assembly.

This product should be used and stored only in temperatures of no less than 45°F, and no more than 105°F, and protected from prolonged exposure to harsh outdoor elements such as direct sun, rain/snow, cold/heat, and wind.

DO NOT use or store the AquaDoula in freezing temperatures, as this may cause severe damage to the AquaDoula components.

This product is a modular system that utilizes a premium grade vinyl liner that, as with any vinyl liner product, is susceptible to potential leakage via cut, abrasion, or other abnormality of the vinyl liner.

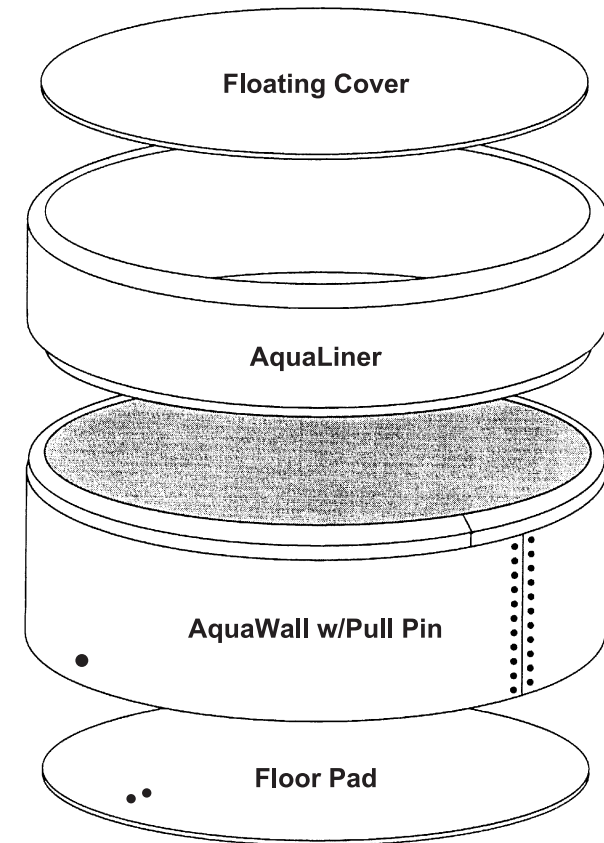
Caution should be exercised when using this product indoors, with adherence to local codes, particularly those relative to structural loads and support. Depending on ambient room temperature, water temperature, humidity, and duration of AquaDoula use, condensation may occur under the AquaLiner.

## Disclaimer

Assembling, filling, and using the AquaDoula is done so in the full discretion of the user. TUBS TO GO!/AquaDoula expressly accepts no liability for any and all injury to persons and or damage to property that may be incurred by the assembly, filling and otherwise use of the AquaDoula, including but not limited to damage caused by weight limitations with respect to structural support, and water damage caused by water displacement or leakage of the AquaDoula.

# AquaDoula®

## Diagram



# WARNINGS AND SAFEGUARDS

## STANDARD WARNINGS AND SAFEGUARDS for the safe operation and use of the AquaDoula Spa

- CAUTION:** Fire, electrical shock, severe damage to the AquaDoula, and personal harm may occur if the AquaDoula is not set-up and used properly, and all of the enclosed instructions are not properly followed.
- CAUTION:** Pregnant women and persons suffering from heart disease, diabetes, high or low blood pressure should not enter the AquaDoula without prior medical consultation and permission from their doctor.
- CAUTION:** Do not use the AquaDoula while under the influence of alcohol, anticoagulants, antihistamines, vasoconstrictors, vasodilators, stimulants, hypnotics, narcotics, or tranquilizers.
- CAUTION:** Check AquaDoula water temperature before use. Maximum safe water temperature must be established by a medical practitioner.
- CAUTION:** Do not use alone.
- CAUTION:** Unsupervised use by children is prohibited. Never leave children unattended without adult supervision in the vicinity of the filled AquaDoula.
- CAUTION:** Enter and exit slowly.
- CAUTION:** Observe reasonable time limits to avoid nausea, dizziness and fainting. Should you experience any of these symptoms, carefully exit the AquaDoula immediately.
- CAUTION:** Keep all breakable objects out of the area.
- CAUTION:** DO NOT plug in the AquaDoula Heating System until the AquaDoula is completely filled to the proper water level. Plugging in the Heating System without the proper water level will cause overheating of the Heating System, severely damaging the Heater Pad and the AquaWall.
- CAUTION:** DO NOT UNDERFILL. Taking into consideration water displacement when individuals enter the AquaDoula, the minimum level of water MUST be maintained at all times for the safe operation of the AquaDoula Heating System. If the minimum water level is not maintained through the entire operation and use of the AquaDoula, severe harm to individuals and the AquaDoula may occur, including electric shock and/or fire.
- CAUTION:** DO NOT immerse any portion of the AquaDoula Heating System in water.
- CAUTION:** DO NOT plug Temperature Controls directly into a receptacle; only use the AquaDoula Heating System with the GFCI Cord Set.
- CAUTION:** DO NOT plug the GFCI Cord Set into any receptacle that is not grounded. If not sure, the receptacle to be used should be tested for ground prior to use.
- CAUTION:** The Heater Pad must be flat against the AquaWall with no folded Heater Pad edges and NO obstructions between the Heater Pad and the AquaWall, such as cords, Floor Pad, or the AquaLiner.
- CAUTION:** DO NOT run any of the cords under any portion of the AquaWall. This may result in a pinched or damaged cord presenting a potential electric shock hazard. If any cord is found to be damaged while in operation, unplug immediately, and DO NOT use the Heating System.
- CAUTION:** When using the AquaDoula, DO NOT press against the heater pad and keep all objects that might be used in the AquaDoula (seats, etc.) away from the heater area, cords, and probe.
- CAUTION:** Avoid electric shock and personal injury by keeping all electrical devices, such as lamps and appliances, a minimum of ten (10) feet away from the filled AquaDoula at all times.
- CAUTION:** UNPLUG the AquaDoula Heating System BEFORE draining the AquaDoula.
- CAUTION:** DO NOT use a damaged AquaDoula as usage promotes further damage and danger to equipment and person.
- CAUTION:** Keep all sharp foreign objects out of the AquaDoula to protect against punctures or other damage to the AquaLiner. If the AquaLiner is ever damaged, unplug Heating System immediately.
- CAUTION:** Emergency telephone numbers for police, fire and rescue should be posted at the nearest telephone.
- CAUTION: YOU CAN ACCIDENTALLY DROWN WHILE USING THE AQUADOULA. CHILDREN MUST BE SUPERVISED AT ALL TIMES WITHIN TWENTY (20) FEET OF THE AQUADOULA.**
- CAUTION: USE OF THE AQUADOULA MAY RESULT IN INJURY OR DEATH.**
- CAUTION: TO AVOID RISK OF FIRE, SHOCK, DAMAGE TO EQUIPMENT, OR PERSONAL INJURY, INSTALL PROPERLY AND FOLLOW ALL INSTRUCTIONS.**

# AquaDoula®

## Assembly

**Step 1.** Choose an area at least 6 ft. in diameter that is clean and level for setting up the AquaDoula.

**Step 2.** Stand the AquaWall with the Pull-Pin upright, unbuckle and remove the Carrying Strap, and unroll AquaWall forming a circle.

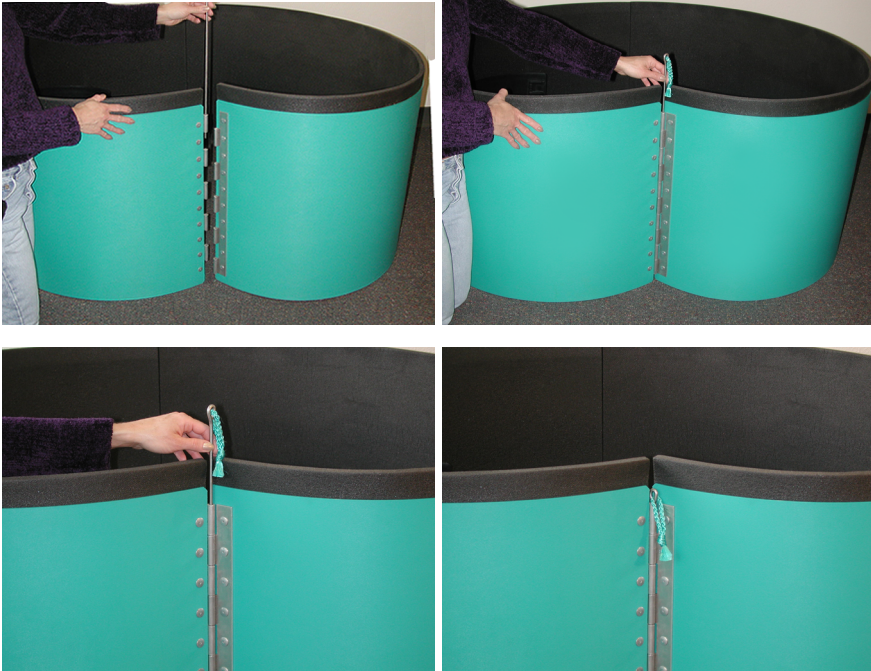
**NOTE:** If the AquaWall has been rolled tightly during storage or transport, the material may initially want to stay in that rolled up state when it is unrolled. Conversely, after the AquaDoula has been set-up awhile for use, this “memory-like” quality of the material may also make the AquaWall a little difficult to tightly roll up for storage.

**NOTE:** Minor abrasions or scratches to the AquaWall, as well as any minor separation of the AquaWall’s plastic/ foam composition, during shipping and handling are not uncommon and do not affect the performance or appearance of the fully assembled AquaDoula.



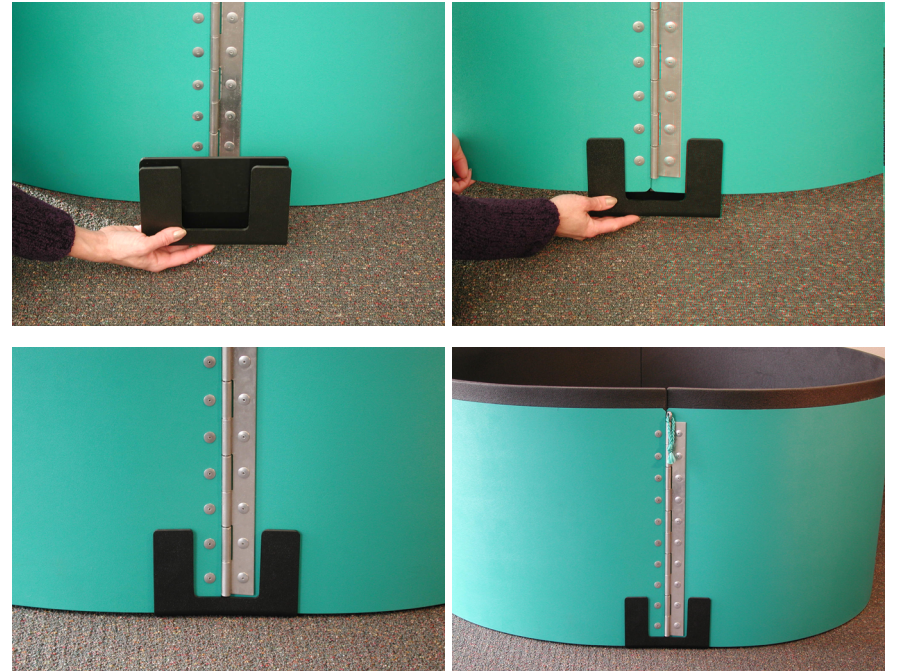
**Step 3.** Meet the ends of the AquaWall together, allowing them to slightly curve to the center of the AquaWall circumference in an inverted “V” fashion.

**Step 4.** Slide the Pull-Pin up and out of hinge-seam knuckle located on the one end of the AquaWall. Align both ends hinge-seam knuckles together and slide the Pull-Pin down through the knuckles, locking the AquaWall ends together.



**Step 5.** Shape the AquaWall into a circular form by placing the Floor Pad (the black 52” foam circular pad with two 3/8 inch holes in it) on the floor within the circumference of the AquaWall, using the Floor Pad as a circular guide. Align the two 3/8 inch holes in the Floor Pad with the single 1 inch hole in the base of the AquaWall.

**Step 6.** To hold the AquaWall in a circular form, install the AquaWall Clip where the hinge-seam is located by lifting the AquaWall and attaching the AquaWall Clip to the base of the AquaWall, with the two eared side of the AquaWall Clip facing out, the ears flanking each side of the hinge-seam, and the AquaWall resting snug in the AquaWall Clip’s groove.



AquaDoula®

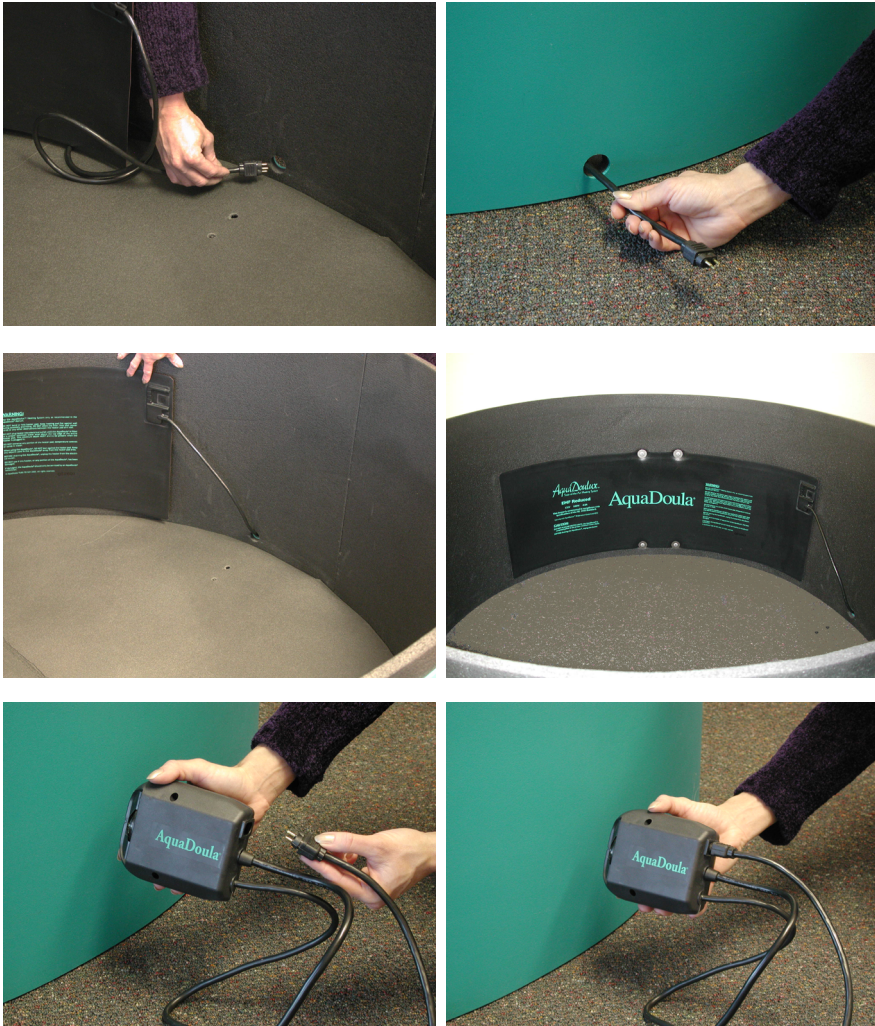
AquaDoula®

**Step 7.** Run the heater pad cord w/mini-plug out through the 1 inch hole in the base of the AquaWall, and plug into the Temperature Controls. Plug the Temperature Controls three-prong plug into the GFCI.

**NOTE:** The center of the AquaDoula Heater Pad is adhered securely to the AquaWall. Important: For the safe and proper operation of the AquaDoula Heating System, be sure the Heater Pad is flat against the AquaWall with no folded Heater Pad edges and no obstructions between the Heater Pad and the AquaWall, such as cords, Floor Pad, or the AquaLiner.

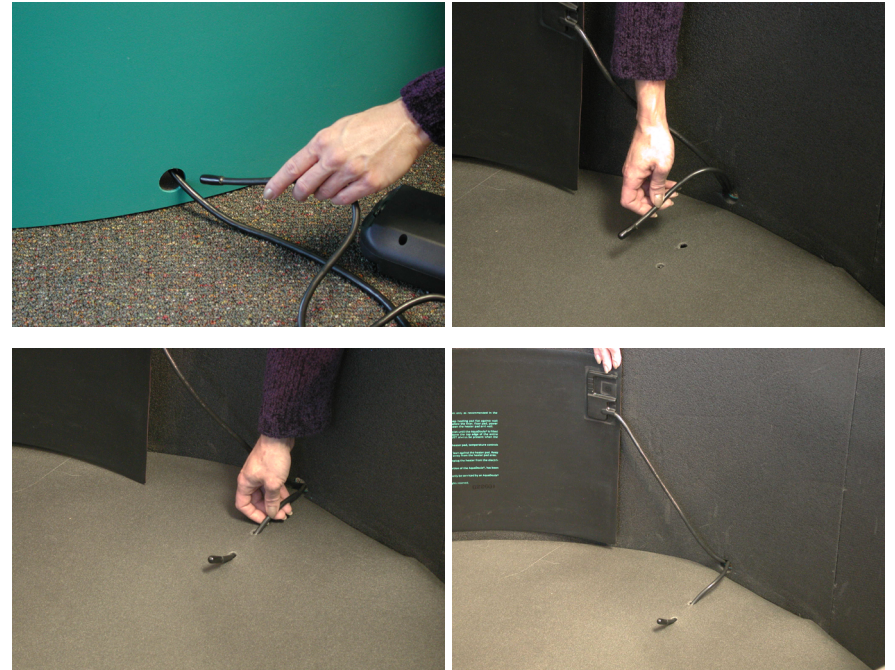
**CAUTION:** DO NOT plug Temperature Controls directly into a receptacle; only use the AquaDoula Heating System with the GFCI.

**CAUTION:** DO NOT plug in the AquaDoula Heating System until the AquaDoula is completely filled to the proper water level (Step 13). Plugging in the Heating System without the proper water level will cause overheating of the Heating System, severely damaging the Heater Pad and the AquaWall.



**Step 8.** Run the Temperature Control's Temperature Probe in from the outside of the AquaWall through the same 1 inch hole. Fasten the Temperature Probe to the Floor Pad by threading the Temperature Probe through the 3/8 inch holes in the Floor Pad, making sure that the end of the Temperature Probe rests on the top of the Floor Pad.

**CAUTION:** DO NOT run any of the cords under any portion of the AquaWall. This may result in a pinched or damaged cord presenting a potential electric shock hazard. If any cord is found to be damaged while in operation, unplug immediately, and DO NOT use the Heating System.



## WARNING!

### PREVENT SEVERE SPA DAMAGE AND PERSONAL INJURY

- 1) Do Not plug in the Heater until the Spa is full of water to the specified level.
- 2) Do Not drain the Spa before first unplugging the Heater.
- 3) Do Not immerse Temperature Controls in water.
- 4) Always check water temperature before entering spa.

AquaDoula®



**Step 9.** Install the AquaLiner by unfolding and spreading out the AquaLiner inside the tub. Pull the lip of the AquaLiner over the top of the AquaWall and down to the base of the outside of the AquaWall, being sure that the AquaDoula Heating System is not disturbed and that the Heater Pad is flat against the inside of the AquaWall. Smooth out the wrinkles and folds in the AquaLiner's floor area.

**TIP:** For easier installation of the AquaLiner, keep the AquaLiner at or above room temperature in a warm area prior to installation to make the vinyl more supple and easier to install, as the vinyl of the AquaLiner may be cold and stiff from packing and shipping.

**NOTE:** The AquaDoula's AquaLiner is made of premium grade vinyl that, as with any vinyl liner product, is susceptible to potential leakage. Before installing the AquaLiner, inspect the vinyl for cuts, punctures, or other abrasions likely to cause leakage.

**In the event of a leak, the AquaDoula should be drained and a liner patch applied to the underside of the AquaLiner with the AquaLiner Patch Kit provided, but use only when leakage is definitively determined.)**

**Step 10.** Install the AquaDoula Disposable Liner with the same above procedure.



**Step 11.** Fill the AquaDoula with water from a warm water tap. As water starts to fill the floor area of the AquaDoula, continue to smooth out any remaining wrinkles in the AquaLiner and Disposable Liner as wrinkles will not come out on their own, and become more permanent if not smoothed out.

**IMPORTANT TIP:** As the AquaDoula Heating System is designed to only maintain the water temperature, fill the AquaDoula accordingly, so that the desired comfortable temperature is established when the AquaDoula is full.

**Be aware that filling the AquaDoula with any cold water may cause a thermal layer effect whereas colder water sinks to the bottom and the warmer water rises near the surface where the temperature is monitored. To avoid inaccurate or inconsistent temperature readings, thoroughly stir the water periodically, as it is filling and when the AquaDoula is full.**

**NOTE:** A two-piece garden hose adapter (with male & female threads) for attaching a garden hose to a faucet is included for convenience, though some faucets may not be compatible and require a different size adapter.

**NOTE:** Do not fill directly from a hot water heater tank, as there may be sediment and or rust in the bottom that will flush out into the AquaDoula.

**Step 12. IMPORTANT:** For the safe operation and use of the AquaDoula Heating System, fill the AquaDoula to a level of 6 inches from the top of the AquaDoula AquaWall (particularly, a minimum water level of no less than 2 inches covering the entire top edge portion of the Heater Pad.) A standard ruler may be used to measure and insure this water level above the Heater Pad.

**CAUTION: DO NOT UNDER FILL.** Taking into consideration water displacement when individuals enter the AquaDoula, this minimum level of water must be maintained at all times for the safe operation of the AquaDoula Heating System. If this minimum water level is not maintained throughout the entire operation and use of the AquaDoula, potentially severe harm to individuals, including electric shock, and severe damage to the AquaDoula, including fire, may occur.



**Step 13.** Place the Temperature Controls in a safe dry location as far away from the base of the AquaWall as the cords will allow, and keep the Temperature Controls and cords dry during use. When the AquaDoula is filled to the proper water level, plug the GFCI Cord Set into a three-prong, grounded, 110 volt receptacle.

**CAUTION: DO NOT plug the GFCI Cord Set into any receptacle that is not grounded. If not sure, the receptacle to be used should be tested for proper ground prior to use.**

**Step 14.** Adjust the Temperature Controls dial to a safe and comfortable water temperature (generally 95 to 100 degrees F).

**NOTE: When the actual water temperature reaches the selected setting on the Temperature Controls the amber light of the dial will be off until the Heating System comes on to maintain the temperature.**

**NOTE: As mentioned under Step 11, be aware that filling the AquaDoula with any cold water may cause a thermal layer effect whereas colder water sinks to the bottom and the warmer water rises near the surface where the temperature is monitored. To avoid inaccurate or inconsistent temperature readings, thoroughly stir the water periodically, as it is filling and when the AquaDoula is full.**

**CAUTION: Always test the water for a safe temperature before entering the AquaDoula.**

**Step 15.** Place the AquaDoula Cover on the surface of the water to help insulate the AquaDoula prior to use.

**NOTE: After use, do not replace the cover on the water surface. Rather, begin following the enclosed instructions for draining, disassembly, and cleaning.**



## Disassembly

**CAUTION: Always UNPLUG the Heating System before draining the AquaDoula.**

**Step 1.** Unplug the Temperature Controls from the GFCI Cord Set.

**Step 2.** Attach a garden hose to the discharge connection on top of the pump.

**Step 3.** Submerge the pump in the AquaDoula, slightly tilting the pump for best suction flow.

**Step 4.** Plug the pump's 3-prong plug into the GFCI Cord Set. Plug the GFCI Cord Set into receptacle. DO NOT allow the plug connections to fall into or be submersed in water.

**Step 5.** Monitor pump at all times while in operation, to prevent the pump from getting stuck by suction on the AquaDoula bottom or sucking up the liners. When the AquaDoula is almost empty to less than an inch, pull up on the liners at the floor to allow the pump to remove as much water as possible.

**Step 6.** When finished, unplug the pump/GFCI Cord Set and clean pump prior to storing. To clean, place pump in an appropriate container (a sink/bucket works well) and fill with a bleach/water solution (1 to 10) or other disinfecting solution. Run the solution through pump for 30 seconds. Flush pump with clean water and allow to dry before storing.

**Step 7.** Remove and safely dispose of Disposable Liner. Disinfect the AquaLiner with non-abrasive disinfectant and towel dry completely.

**Step 8.** Remove the AquaLiner, and fold for storing.

**Step 9.** Remove Temperature Control's Temperature Probe from the Floor Pad, disconnect Heating Pad mini-plug from Temperature Controls and separately coil all cords for storing. Remove Floor Pad and wipe clean with disinfectant and towel dry.

**Step 10.** Remove the AquaWall Clip. Pull up on the Pull-Pin and disengage the AquaWall ends, and replace Pull-Pin in the hinge-seam with the knuckle on top.

**Step 11.** Roll the AquaWall and wrap tight for storing with the Carrying Strap.

## Storage/Transporting

The AquaDoula should be stored in a dry place, in temperatures between 45° and 105 °F., and protected from exposure to harsh outdoor elements such as direct sun, rain/snow, cold/heat, and wind. DO NOT use or store the AquaDoula in freezing temperatures, as this may cause severe damage to the AquaDoula components.

During transporting, the AquaDoula components should be secured, as well as, protected from exposure to harsh outdoor elements.

# AquaDoula®

# Limited Warranty

## AQUADOULA/TUBS TO GO!, INC. ONE YEAR LIMITED WARRANTY

TUBS TO GO!, INC. warrants to the first consumer purchaser that this TUBS TO GO! brand product (the "Product"), when shipped in its original container, will be free from defective workmanship and materials which effect the product's performance, and agrees that it will, at its option, either repair the defect or replace the defective Product or part thereof at no charge to the purchaser for parts or labor for the period of one (1) year. If the Product is used commercially, this warranty is not valid.

This warranty is extended only to the original purchaser. A purchase receipt or other proof of date of original purchase will be required before warranty service is rendered.

This warranty only covers failures due to defects in materials or workmanship which occur during normal use. It does not cover damage, including color fading, cuts, punctures, abrasions, wrinkles, brittleness of the Liner, which occurs in shipment or failures which are caused by products not supplied by the warrantor or failures which result from accident, misuse, abuse, neglect, mishandling, misapplication, alteration, faulty installation, set-up adjustments, modification, or commercial use, or repairs by anyone other than an authorized servicer, as well as any component(s) deterioration due to exposure to the elements, or damage that is attributable to acts of God.

Neither the sales personnel of the seller nor any other person is authorized to make any warranties other than those described herein, or to extend the duration of any warranties beyond the time period described herein on behalf of TUBS TO GO!, INC.

The warranties described herein shall be the sole and exclusive warranties granted by TUBS TO GO!, INC. and shall be the sole and exclusive remedy available to the purchaser. Correction of defects, in the manner and for the period of time described herein, shall constitute complete fulfillment of all liabilities and responsibilities of TUBS TO GO!, INC. to the purchaser with respect to the Product and shall constitute full satisfaction of all claims, whether based on contract, negligence, strict liability or otherwise. In no event shall TUBS TO GO!, INC. be liable, or in any way responsible, for any damages caused by the Product which were caused by repairs or attempted repairs performed by anyone other than an authorized servicer.

This warranty covers units which have been operated and maintained in accordance with the owner's instructions furnished with the unit.

This warranty does not apply to the separately provided factory warranty for the accessory items, including but not limited to, heater unit(s) or pump(s).

### THIS WARRANTY DOES NOT APPLY TO THE COST OF SHIPPING AND HANDLING OF THE PRODUCT COMPONENT(S) FOR WARRANTY CLAIM.

This warranty does not apply to part failures caused by normal wear.

#### Limits and Exclusions

There are no express warranties except as listed above.

**THE WARRANTOR SHALL NOT BE LIABLE FOR INCIDENTAL OR CONSEQUENTIAL DAMAGES RESULTING FROM THE USE OF THIS PRODUCT, OR ARISING OUT OF ANY BREACH OF THIS WARRANTY. ALL EXPRESS AND IMPLIED WARRANTIES, INCLUDING THE WARRANTIES OF MERCHANTABILITY AND FITNESS FOR A PARTICULAR PURPOSE, ARE LIMITED TO THE APPLICABLE WARRANTY PERIOD SET FORTH ABOVE.**

#### Instructions for Obtaining Warranty Service

For a warranty claim contact AquaDoula/TUBS TO GO!, INC. at 3101-111th Street SW, Unit N, Everett, WA 98204, (425)348-7888 (9am - 4pm PST, Mon - Fri).

Before shipping any Product component(s) for warranty claim, you must obtain a Return Merchandise Authorization number (RMA#) from TUBS TO GO!, INC. and pack the Product component(s) into the original shipping materials securely. Write the RMA# on the outside of the carton, clearly legible with the shipping label.

Return merchandise must be shipped freight prepaid. TUBS TO GO!, INC. does not accept C.O.D. deliveries. We recommend shipping your Product component(s) insured for the full replacement purchase price.

Please send Product component(s) needing repair to:

AquaDoula/TUBS TO GO!, INC.  
3101 - 111th Street SW, Unit N  
Everett, WA 98204

Please allow up to three (3) to four (4) weeks for the processing of any warranty claim.

#### Repair Service

TUBS TO GO! offers a repair service for damaged AquaDoula component(s) not covered by the Limited Warranty. For current repair and replacement part info, contact TUBS TO GO!/AquaDoula.

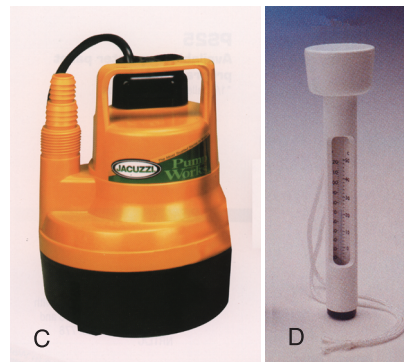
# Accessories & Supplies



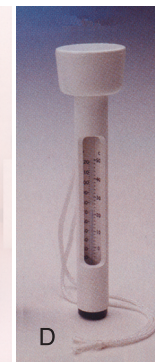
A



B



C



D



E



F

- A Carrying Strap \$15
- B Form-Fit Disposable Liners (Latex Free) \$15/Liner  
(5 pack: \$12/Liner) \$60/pack  
(case of 25: \$10/Liner) \$250/case
- C Submersible Pump \$95
- D Floating Thermometer \$10
- E Booster Seat Cushion \$25
- F Fill Filter \$25

(Not Shown)

- Faucet Adapter (M/F, 2 piece) \$3
- Shoulder Length Gloves (Latex Free)  
(5 pairs: 60¢/pair) \$3/pack  
(case of 50 pairs: 50¢/pair) \$25/case
- Germical Detergent  
(Quart size concentrate makes 32 gal.) \$20/Qt.
- AquaLiner Patch Kit \$3

Prices effective 5/1/05, are subject to change, and do not include shipping & handling.

**1-800-275-6144**  
or (425)348-6729

[www.AquaDoula.com](http://www.AquaDoula.com)



**AquaDoula Purchase \$1199 (new) \$999 (nearly-new)**  
**AquaDoula Rental \$249**